



ARCHITECTURE | LANDSCAPE ARCHITECTURE | URBAN DESIGN



# TWO LOCATIONS, ONE DIVERSE PRACTICE



**NEW YORK**



**SAN JUAN**





# PARKS



# STREETSCAPES



# WATERFRONTS



# MASTER PLANS



# DESIGNING THE WATERFRONT







COMMUNITY ENGAGEMENT



# ENGAGEMENT STRATEGY

## Group 1

### Individual Interviews



**Staff/Stakeholders**

**One-on-one calls or zoom meetings**  
**Individual interviews and surveys in parks**

## Group 2

### Stakeholder Meetings



**Community Boards/Identified Groups**

**Identify existing locations where people already visit, food banks, pharmacies**

## Group 3

### Public Workshops

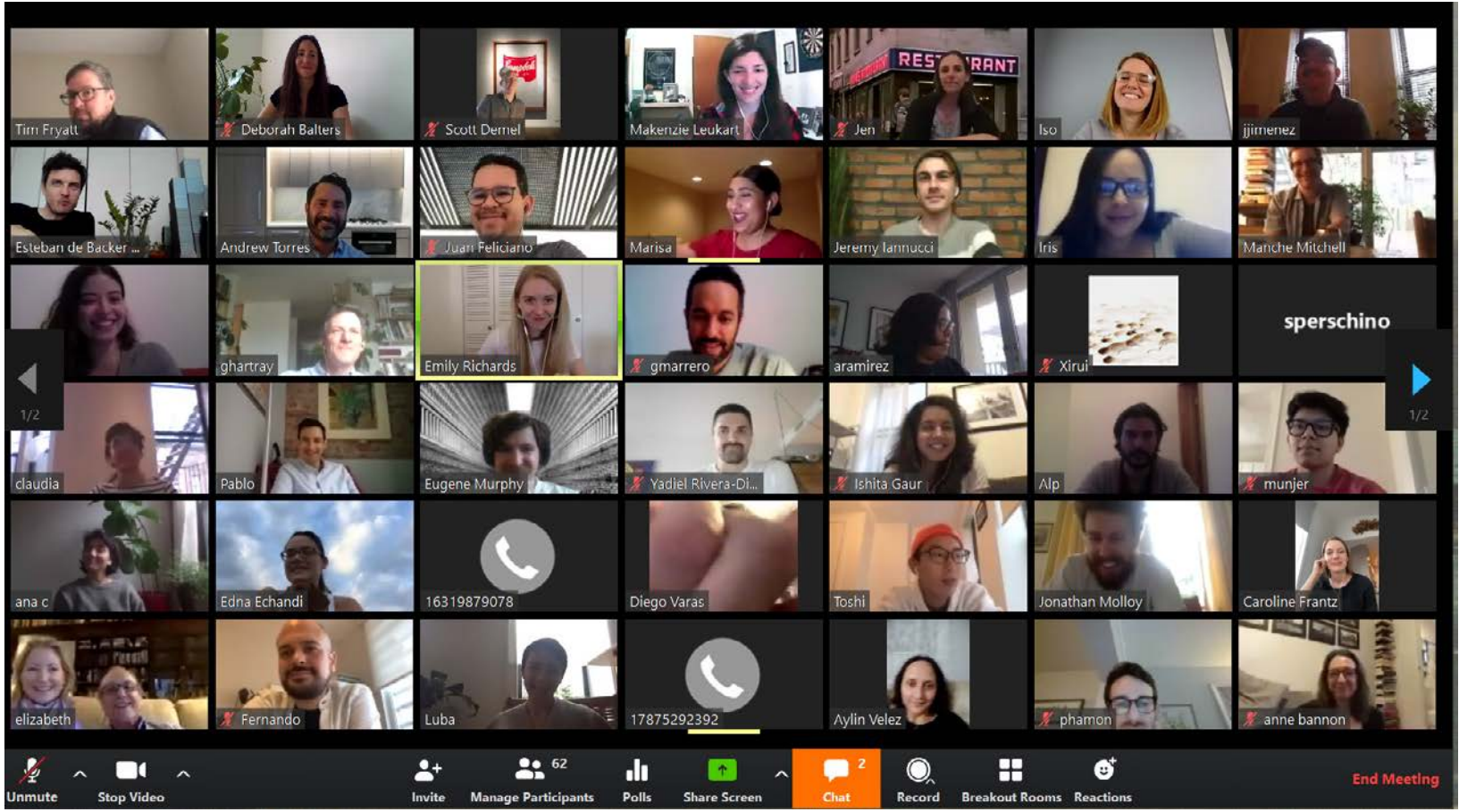


**Community**

**Large Group Zoom Meetings**  
**SurveyMonkey.com**  
**Mentimeter.com**  
**Facebook Surveys**



# WORKSHOPS

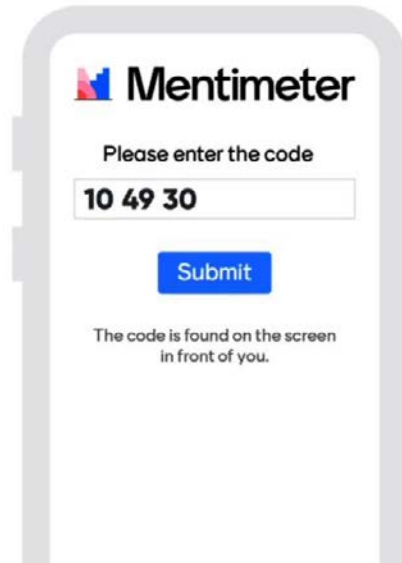


Large interactive workshops have been replaced with zoom meetings where we format so the discussion is participatory and encourages feedback

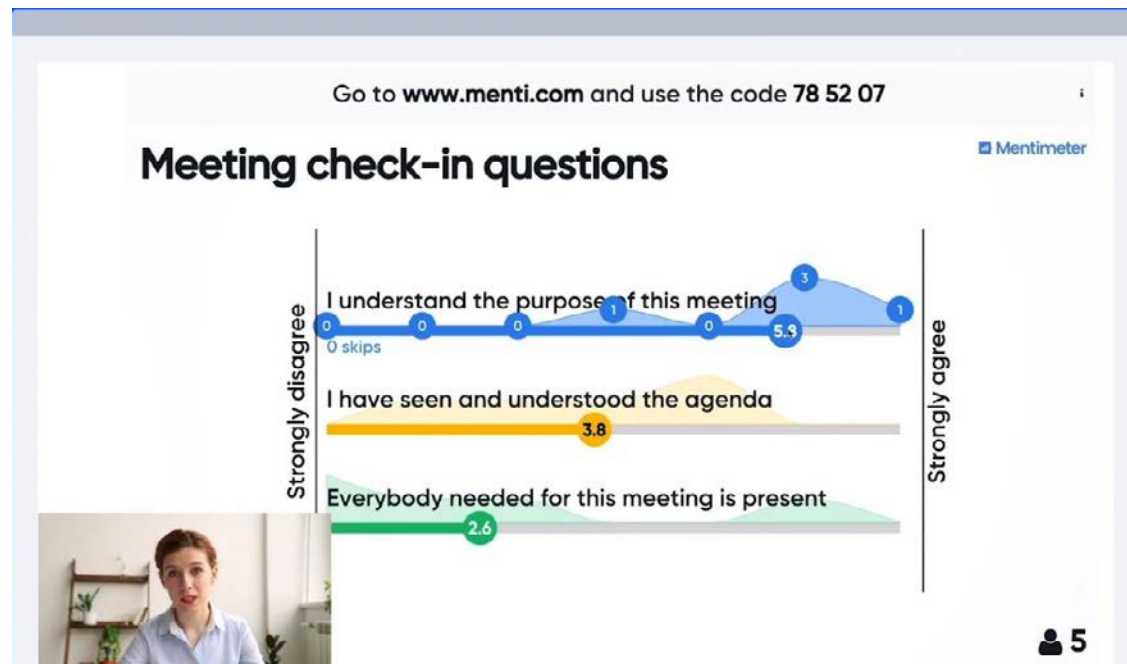


# ONLINE ENGAGEMENT

Go to  
menti.com



Enter  
the code

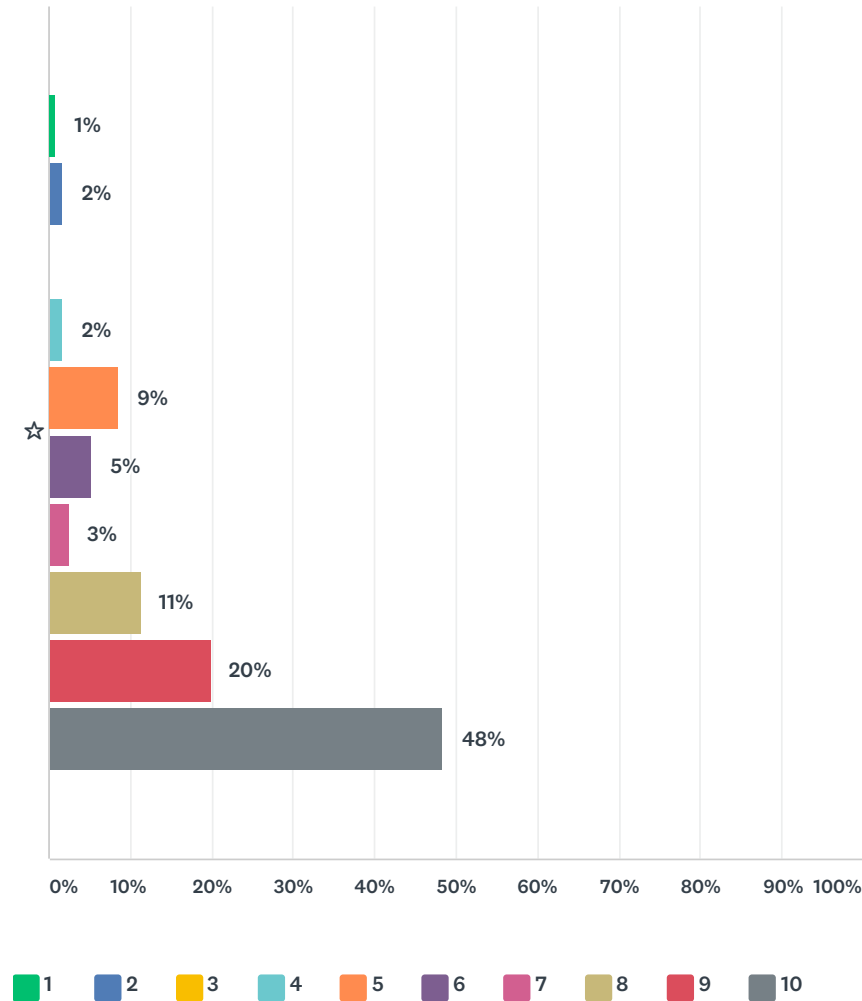


**[www.mentimeter.com](http://www.mentimeter.com)**  
For in-meeting interactive presentation



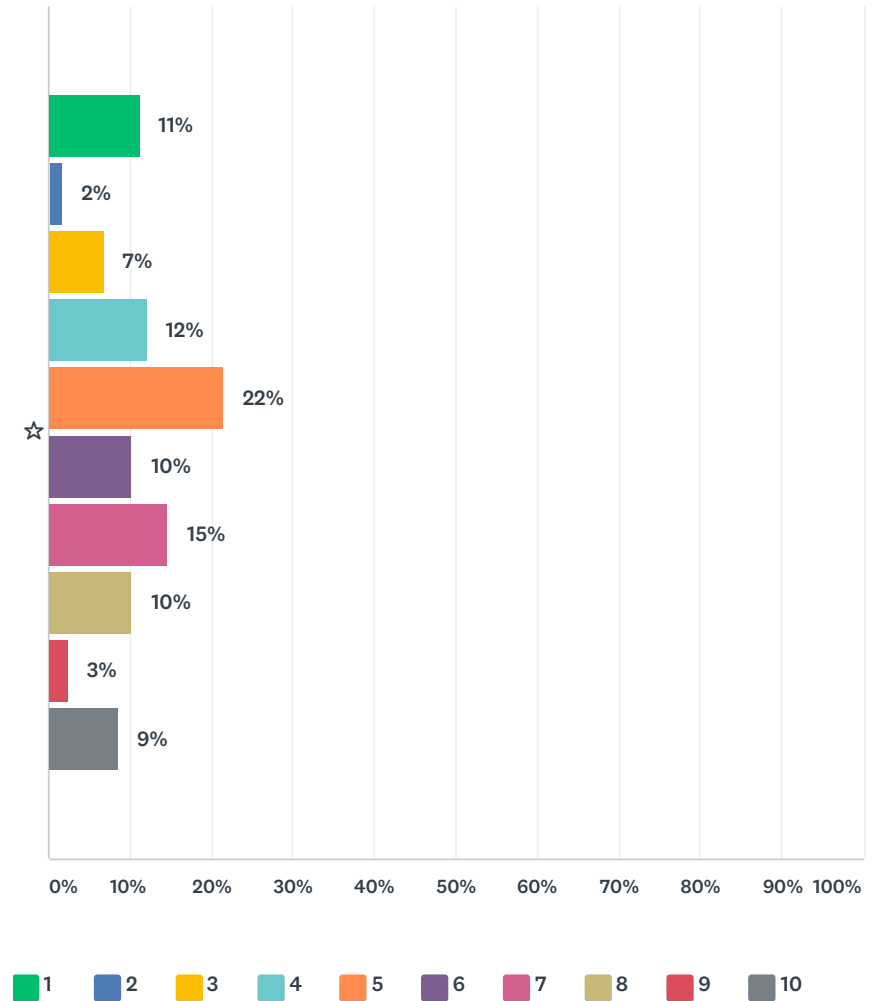
Q1 I feel safe at Snug Harbor

Answered: 116 Skipped: 0



1 2 3 4 5 6 7 8 9 10

Q7 Snug Harbor feels activated throughout campus and the year



1 2 3 4 5 6 7 8 9 10

**[www.surveymonkey.com](http://www.surveymonkey.com)**  
For online surveys at any time



# QUESTIONNAIRES AND SURVEYS

## 1 SATISFACTION/HAPPINESS

PLEASE CIRCLE ONE

	(DISAGREE)	1	2	3	4	5	6	7	8	9	10	(AGREE)
1. Snug Harbor is a good place to work.									8			
2. Snug Harbor runs better because of my work. <i>I've negatively impacted Hort &amp; facilities</i>						5						
3. I feel good about what I do at Snug Harbor.											9	10
4. I believe recent or planned changes at Snug Harbor are headed in the right direction.										9		
5. I believe Snug Harbor should be a one ticket entry institution.							6					
6. Generally, I am able to perform my job well with the current level of services and support.			3									
7. I feel connected to the neighborhood around Snug Harbor.			3									
8. I am able to get to Snug Harbor easily.											9	10

## 2 FACILITIES/ENVIRONMENT

	1	2	3	4	5	6	7	8	9	10
1. The campus infrastructure is adequate. <i>Includes wayfinding?</i>		2								
2. The building infrastructure is adequate. <i>inadequate maintenance</i>			3							
3. The physical work environment is comfortable.						6				
4. The physical work environment conditions are equal or better than other places I've worked.						6				
5. I like the physical work environment.								8		
6. The physical work environment needs improvement.								7	8	
7. Moving around campus is easy at Snug Harbor.								7		
8. Communications are easy at Snug Harbor. <i>Walkie talkies!</i>						6				
9. The programs/ staff I interact with are conveniently located.						6				
10. Additional or improved space could help me do my job better.									9	10
11. Additional or improved technology could help me do my job better. <i>Walkie talkies! wifi printer access</i>									9	10

*No parking & Wayfinding*

In person questionnaires and feedback postcards are now replaced with online tools like surveys, social media polls and interactive zoom meetings like mentimeter.

## SNUG HARBOR COMMUNITY INPUT WORKSHOP

Building P, Snug Harbor, Staten Island, NY 10301  
May 1st, 2019

### AGENDA:

Welcome and Intro Presentation  
Visioning Workshop  
Share back and Closing Remarks

### MEET OUR CREATIVE DESIGN TEAM:

Marvel Architects  
The LiRo Group  
Nelson Byrd Woltz Landscape Architects  
CodeGreen Solutions  
James Lima Planning + Development  
CO-OP Branding  
Open Studios - Wayfinding  
Karen Karp and Partners - F&B Programming  
Domingo Gonzalez Associates - Lighting  
JHPA - Historic Preservation Architect  
Cerami & Associates - Acoustics  
Vertical Systems Analysis  
KM Associates, Inc. - Code Zoning & Expediting  
Ducibella Venter & Santore - Security



MORE THOUGHTS AND IDEAS?  
TELL US HERE:

OR HERE:  
<https://snug-harbor.org/about-us/contact-us/>

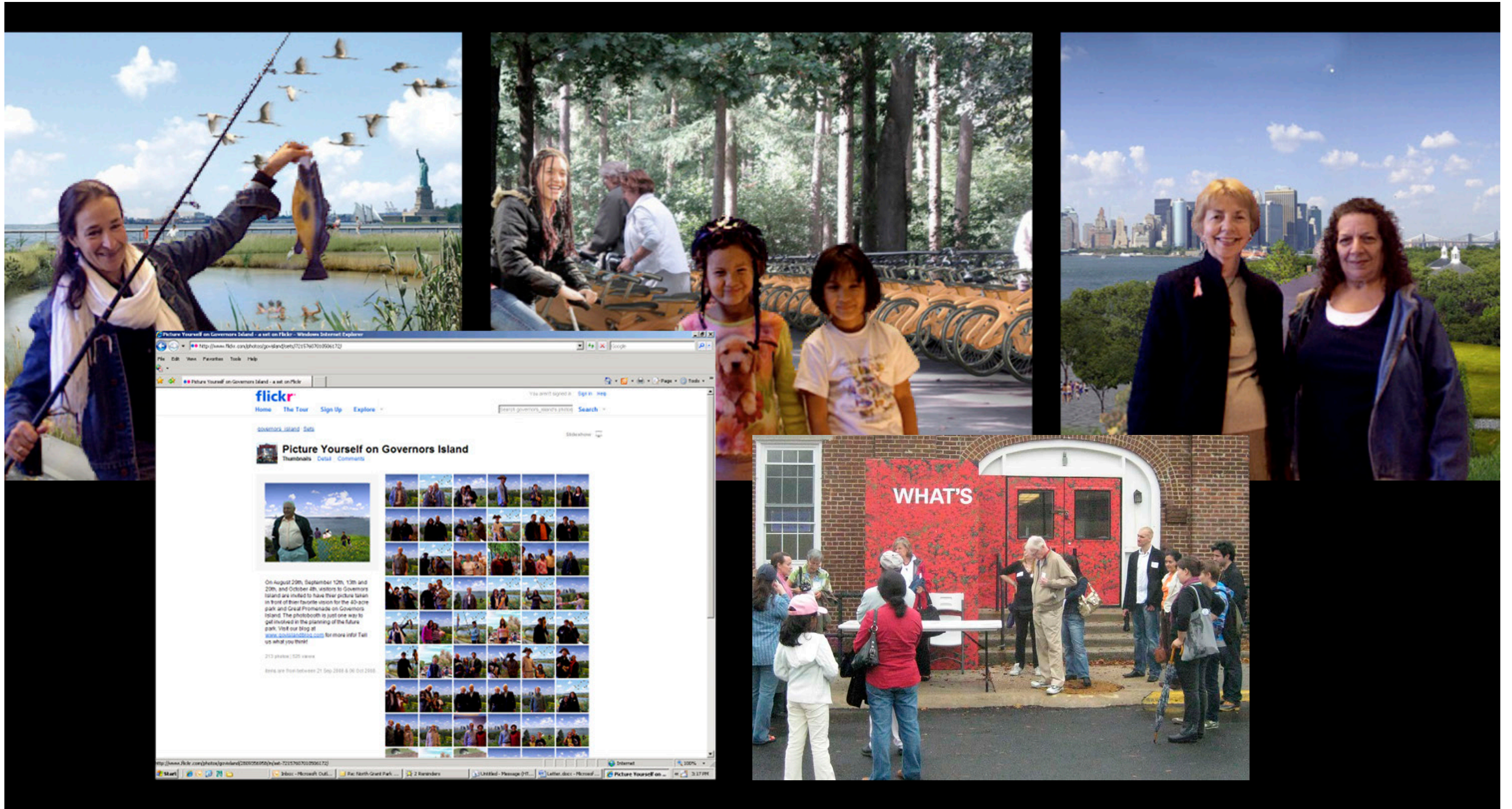


# MEET PEOPLE WHERE THEY ARE





# CREATE EXCITEMENT





YANKEE STADIUM

BRONX POINT

MILL POND PARK

# MILL POND PARK AND BRONX POINT





MILL POND PARK



# MILL POND PARK





# MILL POND PARK





# MILL POND PARK







HOSTOS COMMUNITY COLLEGE

SUBWAY

BRONX TERMINAL MARKET

MAJOR DEEGAN EXPY

SITE

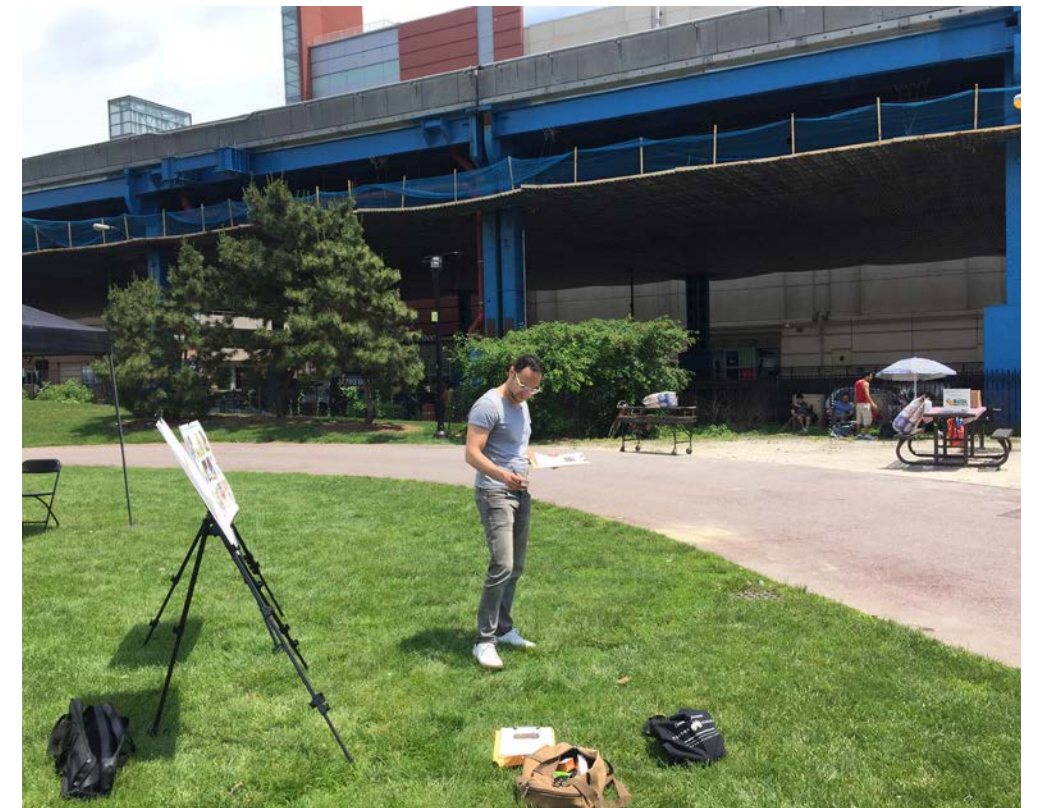
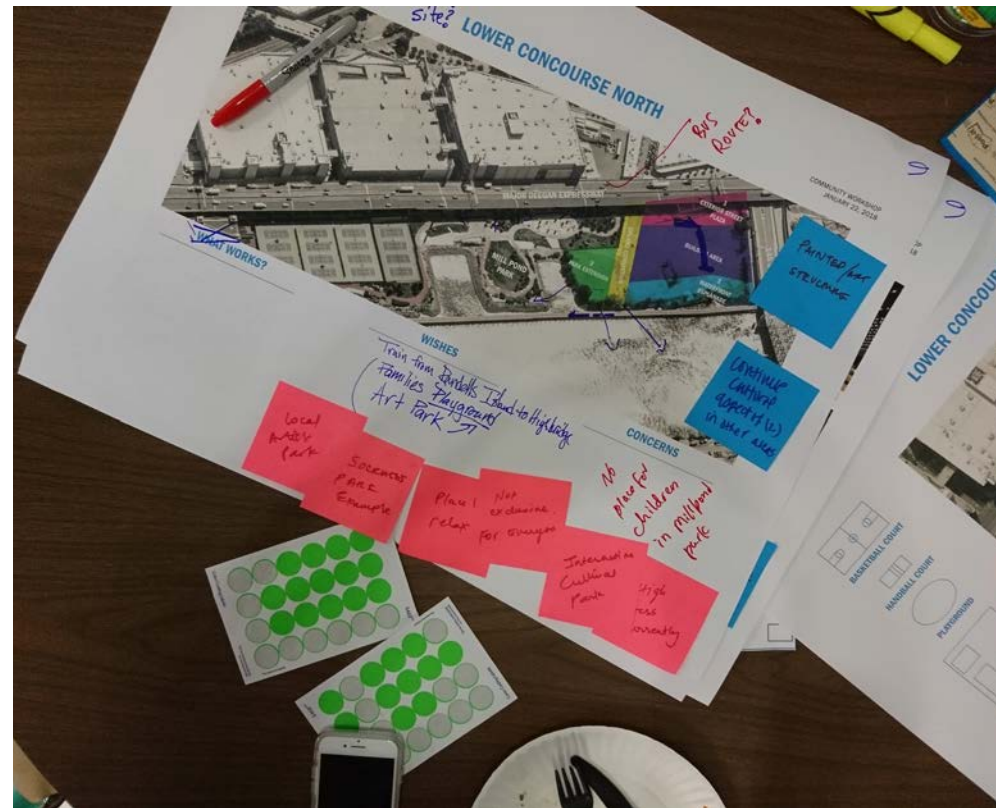
145TH ST BRIDGE

MILL POND PARK

BRONX POINT

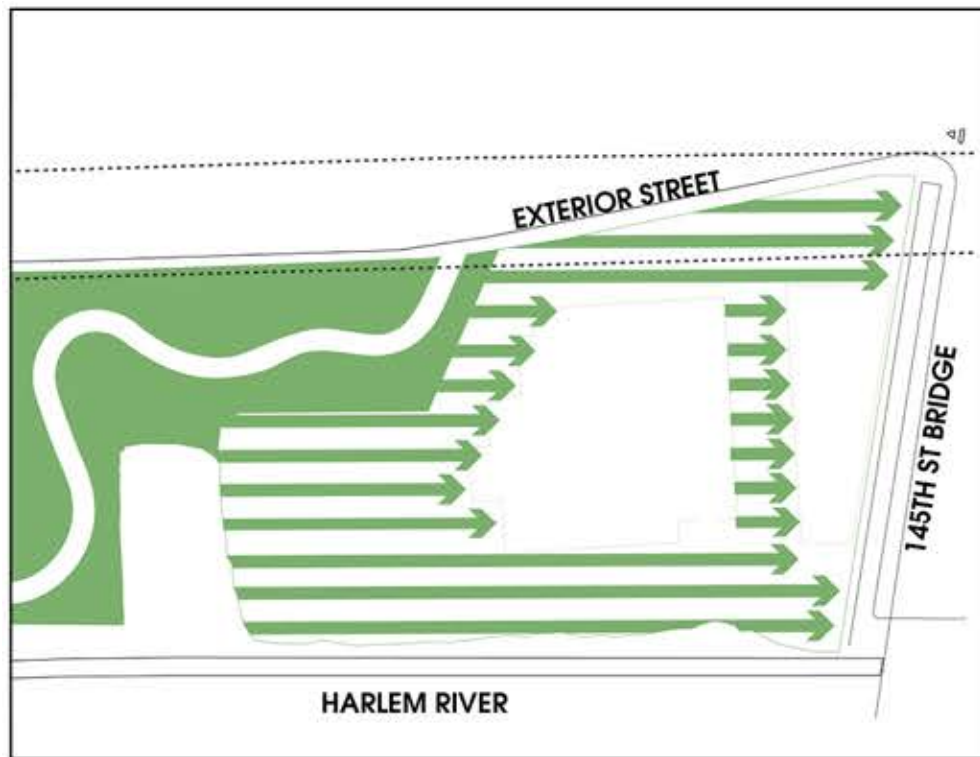


# BRONX POINT

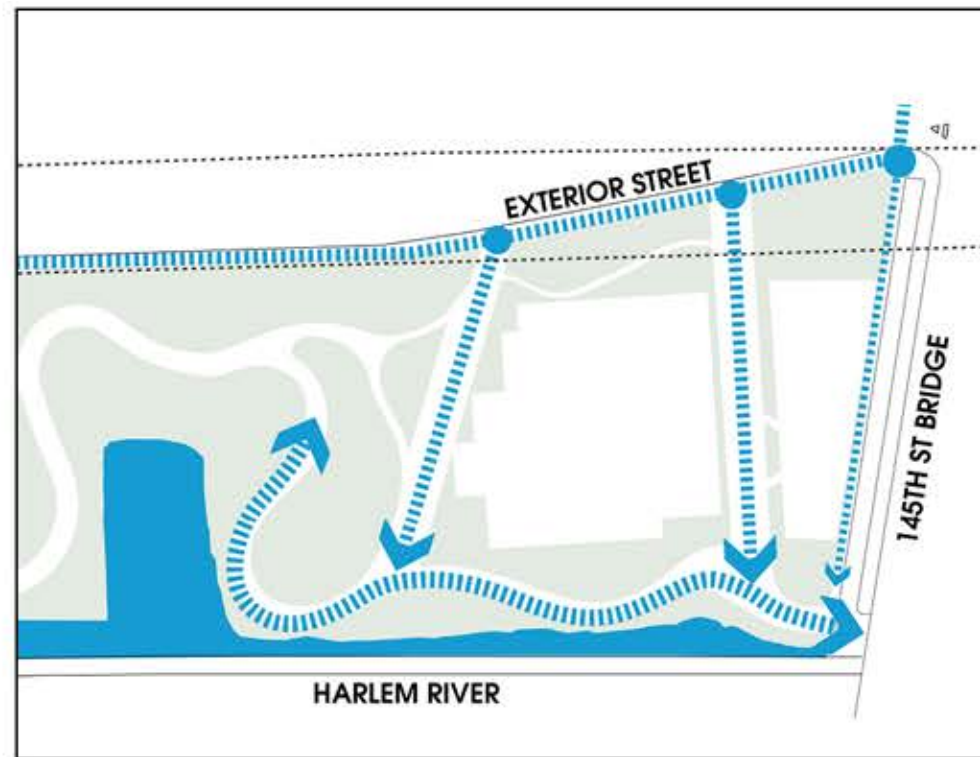




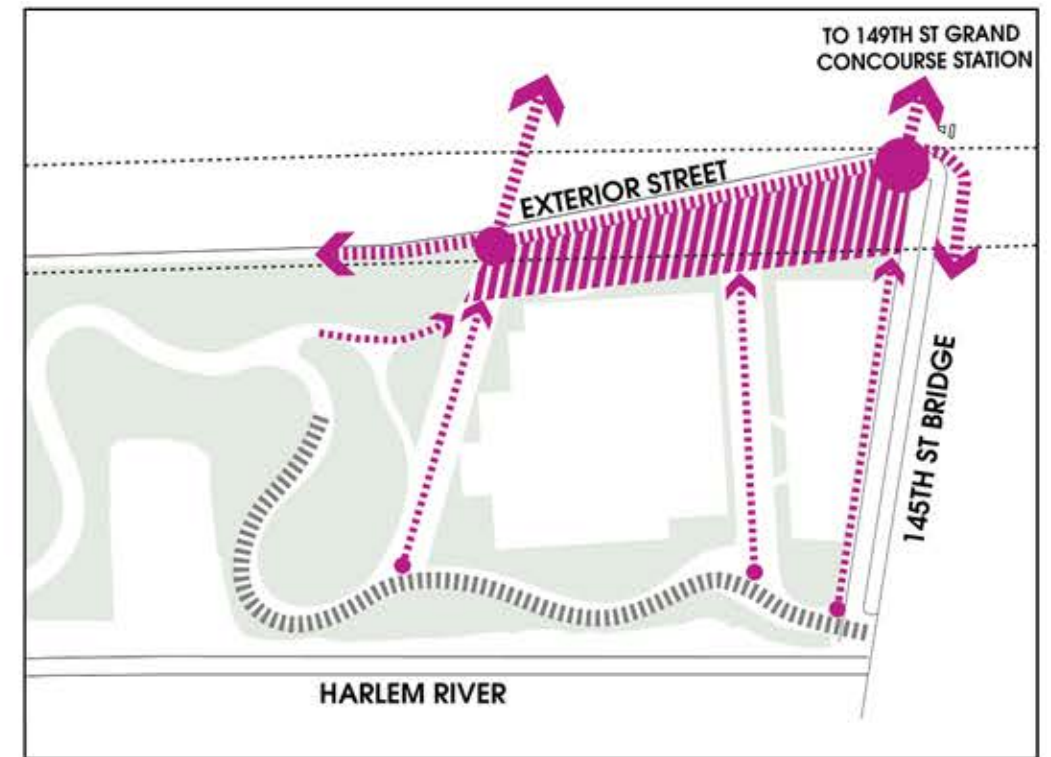
# BRONX POINT



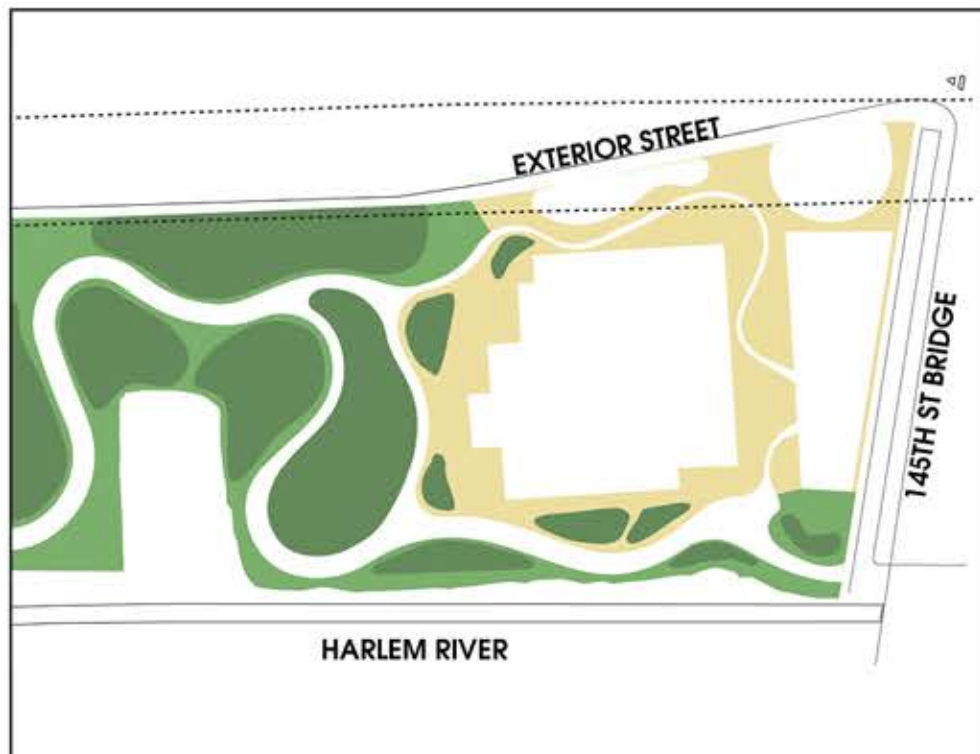
1. EXPAND MILL POND PARK



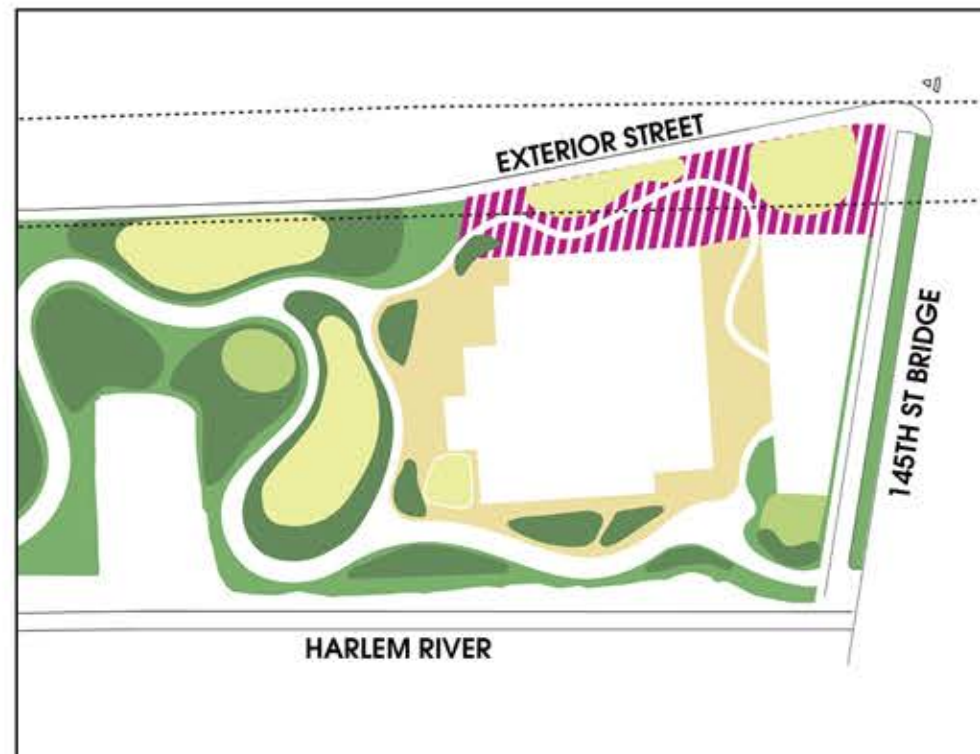
2. CONNECT TO WATERFRONT



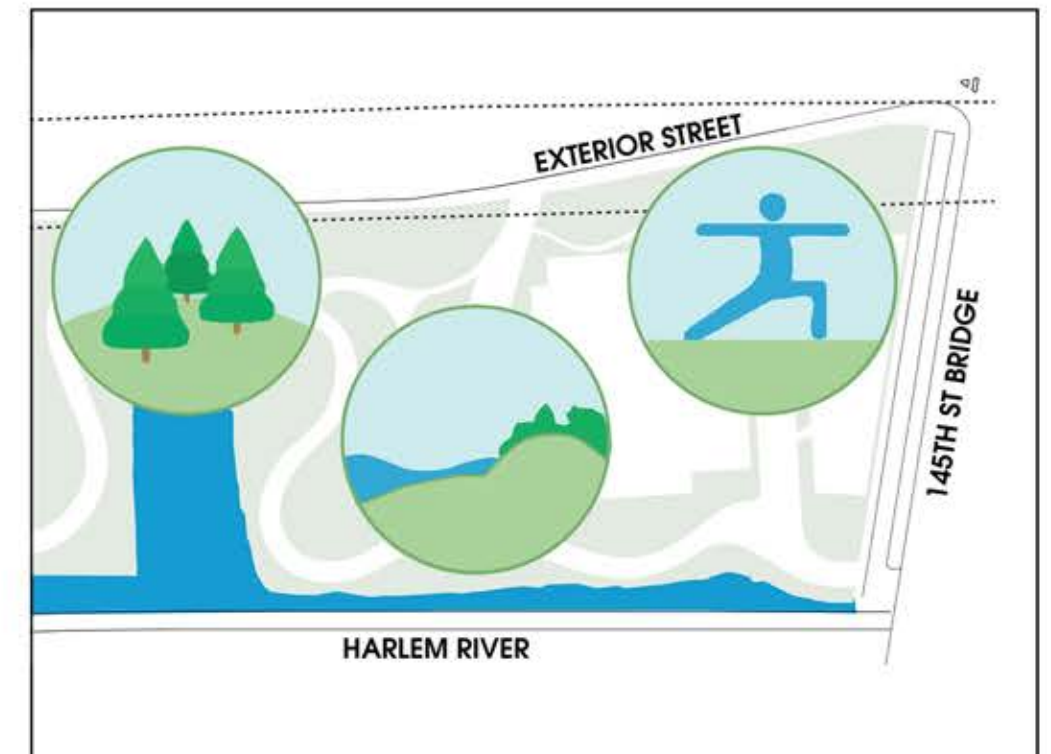
3. CONNECT TO NEIGHBORHOOD



4. CREATE SEAMLESS OPEN SPACES



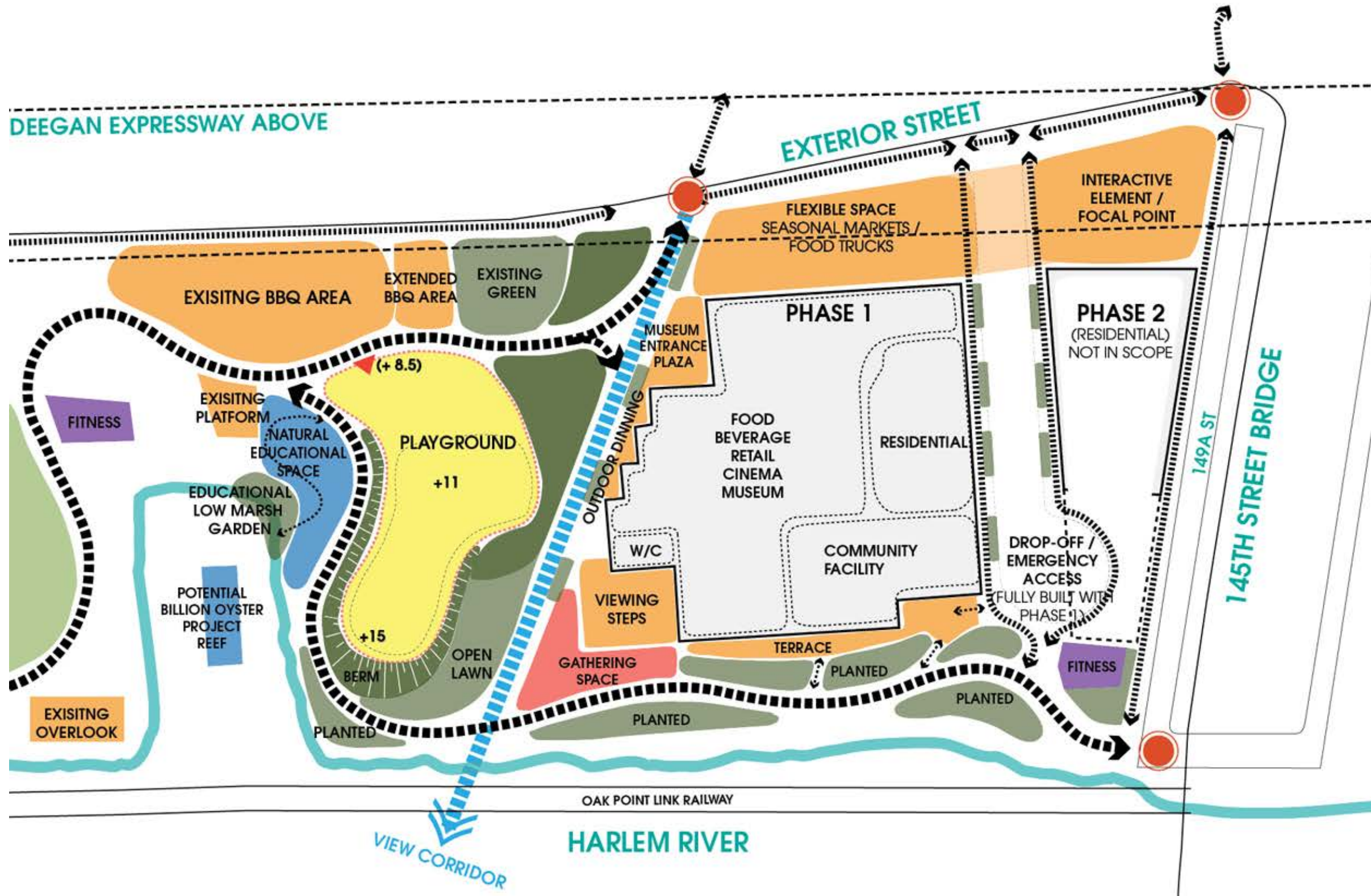
5. CREATE ACTIVE RECREATION SPACES



6. SUSTAINABLE, RESILIENT, ACTIVE DESIGN



# BRONX POINT



## Legend

### OPEN SPACE

- PASSIVE RECREATION
- FITNESS
- PLAYGROUND
- GATHERING SPACE
- PLANTING AREA
- GARDEN BUFFERS
- EDUCATIONAL
- PEDESTRIAN PATHWAY
- PROPERTY LINE
- EXTENT OF WORK
- SITE ENTRY



# BRONX POINT





# BRONX POINT



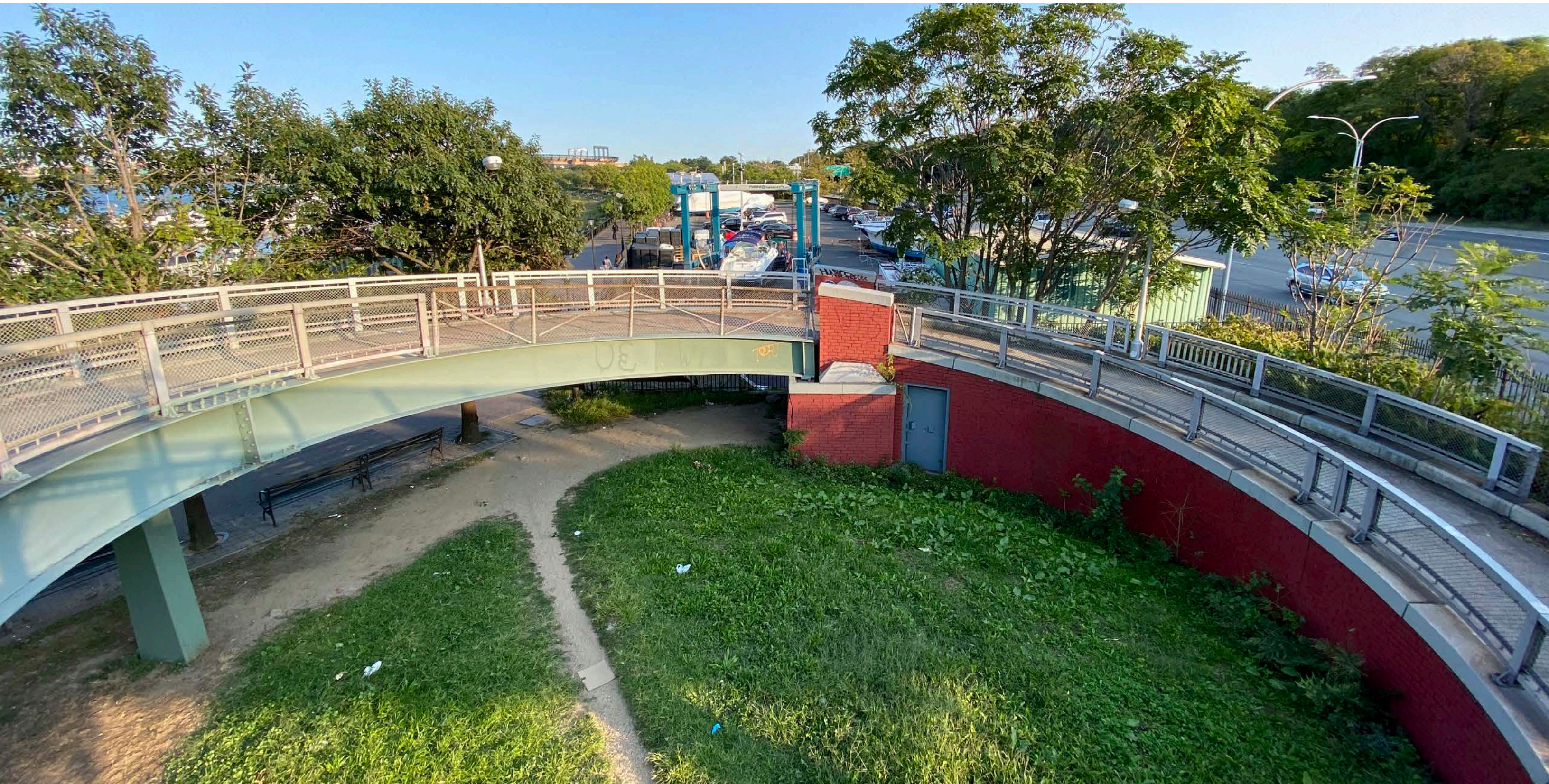




# FLUSHING BAY PROMENADE



# LATENT SITE OPPORTUNITIES

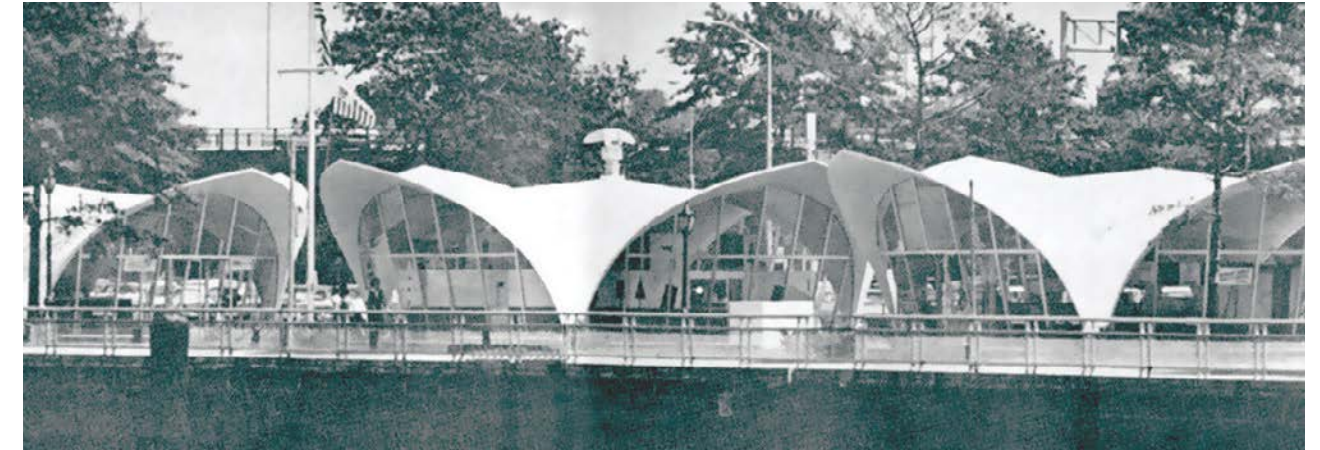




# A PLACE OF HISTORY

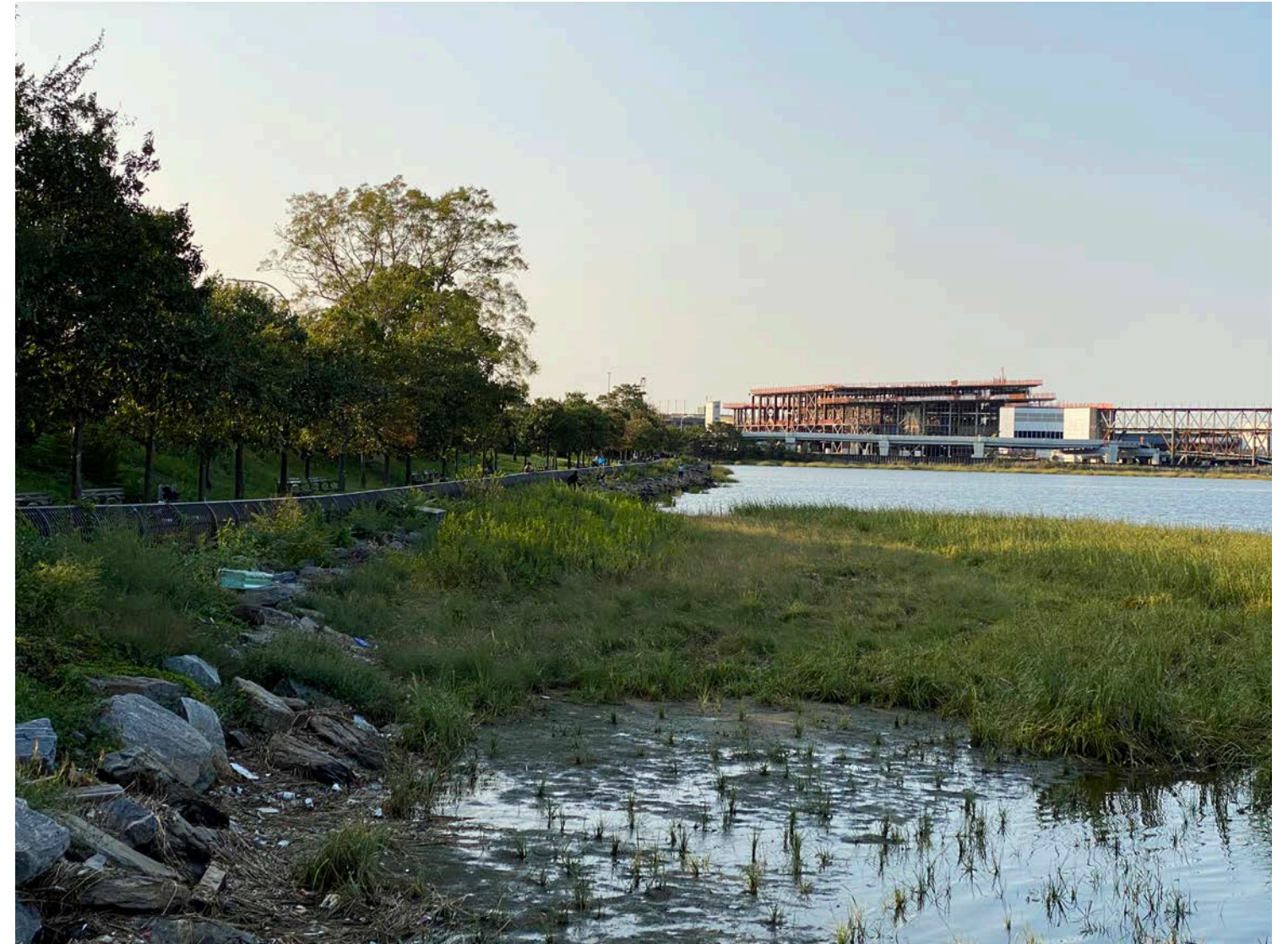


1964 WORLD'S FAIR MARINA





# A PLACE OF ECOLOGICAL IMPORTANCE



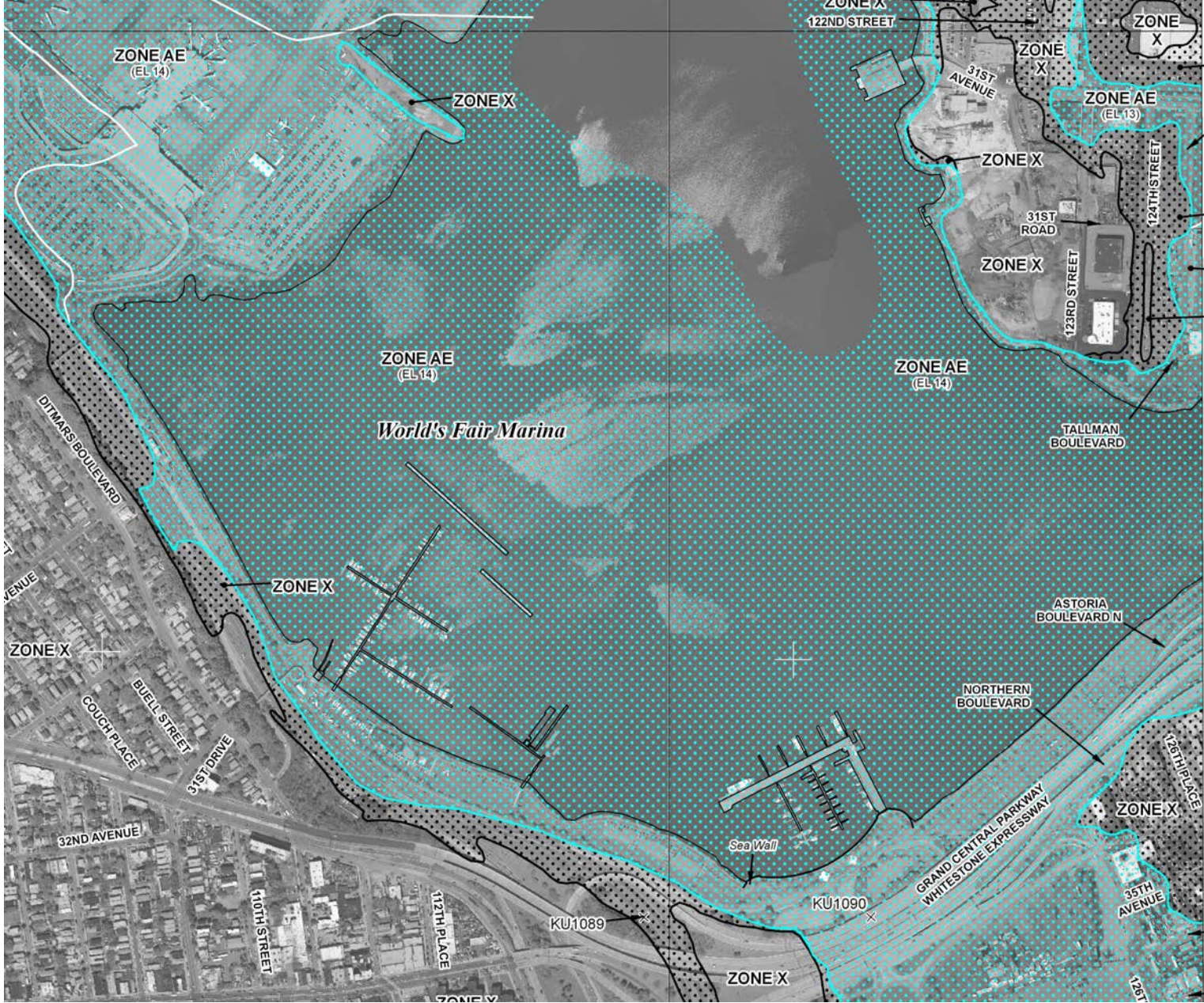


# A PLACE OF CONNECTION



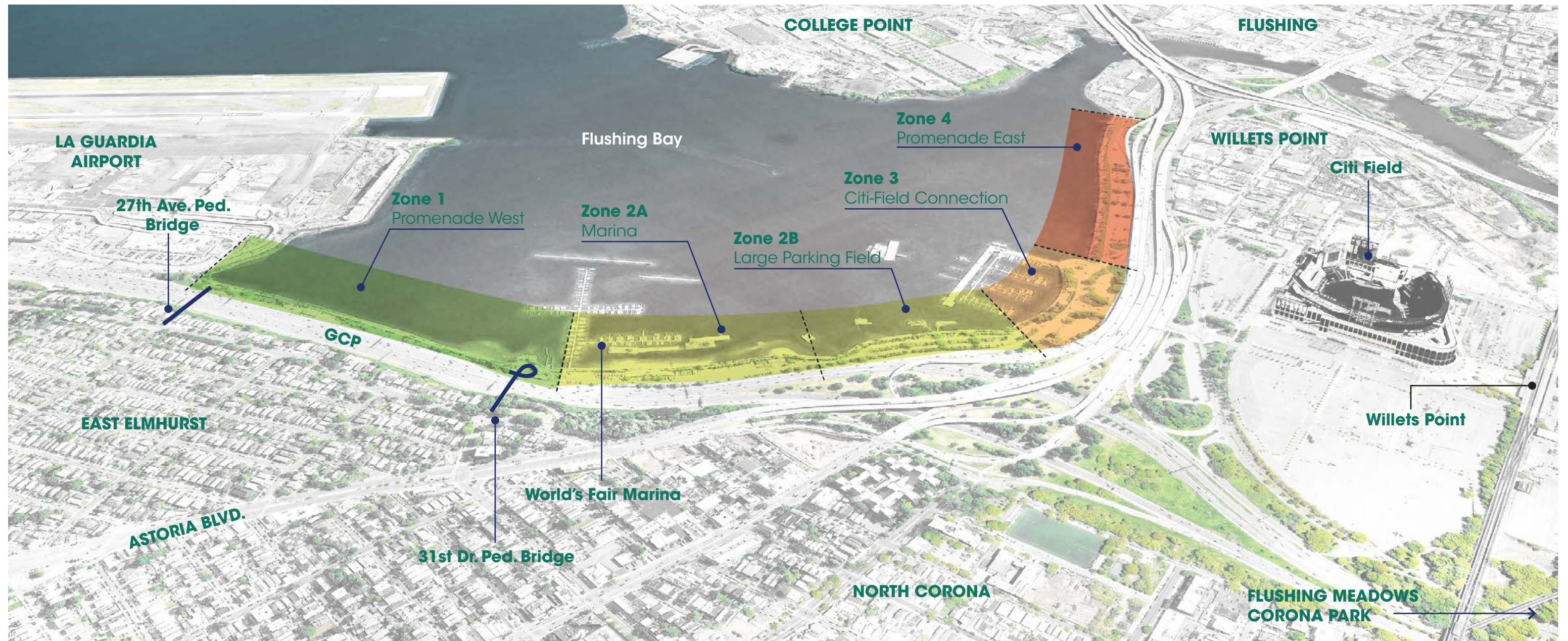


# WITH ITS CHALLENGES





# UNDERSTANDING THE PROMENADE



**Zone 1**   
Promenade West

- Bounded by the two pedestrian bridges
- The bridge from 31st Dr comes down to a nice open space
- Nicest area because green buffer between the promenade and the cars

**Zone 2A**   
Marina

- Promenade is pinched
- As a pedestrian, just want to get past this area

**Zone 2B**   
Large Parking Field

- Acts as combination of through road and parking.
- Pinches the promenade
- Some railing and rip rap repairs needed

**Zone 3**   
Citi-Field Connection

- No safe pedestrian crossing from lots to promenade
- No good pedestrian path to Citi Field
- A lot of thru traffic without controls.
- Candelas are not readily visible
- Good for only bicycle access from Corona Park

**Zone 4**   
Promenade East

- A lot of area for Citi Field parking
- No safe way to walk from parking to promenade
- No way to cross from the eastern lots to the Citi Field area
- Not a lot of walk-in pedestrian traffic
- Simple promenade condition